

**PUBLIC SUMMARY OF TREE PLANTATION OPERATIONS
TOWARDS FOREST STEWARDSHIP COUNCIL (FSC®)
CERTIFICATION
Year 2019**

Organization : **Sabah Softwoods Berhad(SSB)**
Company No. : **016887-D**
Contact Person : **Ram Nathan**
Phone No. : **019-8138605**
Email : **ram@softwoods.com.my**
Address : **P.O.Box 60966, 91019 Tawau**
Fax No. : **089 - 754225**
Office No. : **089 – 771333 and 089-766919**
Approved By : **Hj. Mohd. Hattah Bin Hj. Jaafar**
Chief Executive Officer

INTRODUCTION

Sabah Softwoods Berhad (SSB) also formerly known as **Sabah Softwoods Sdn. Bhd. (SSSB)** was incorporated in **1973** and is 70% owned by InnopriseCorporationSdn.Bhd.

LOCATION AND AREA

The company's land bank covers 60,600 ha and is located at **Brumas** Region (CL. 105467687) with a land area of **41,505 ha** and at Kalabakan Region (CL. 105472508) with a land area of **19,195 ha**. Brumas Region is located between Latitude 4°24'N and 4°44'N and Longitude 117°38'15"E and 117°50'E and Kalabakan Region is located between Latitude 4°23'45"N and 4°38'30"N and Longitude 117°23'45"E and 117°34'45"E.

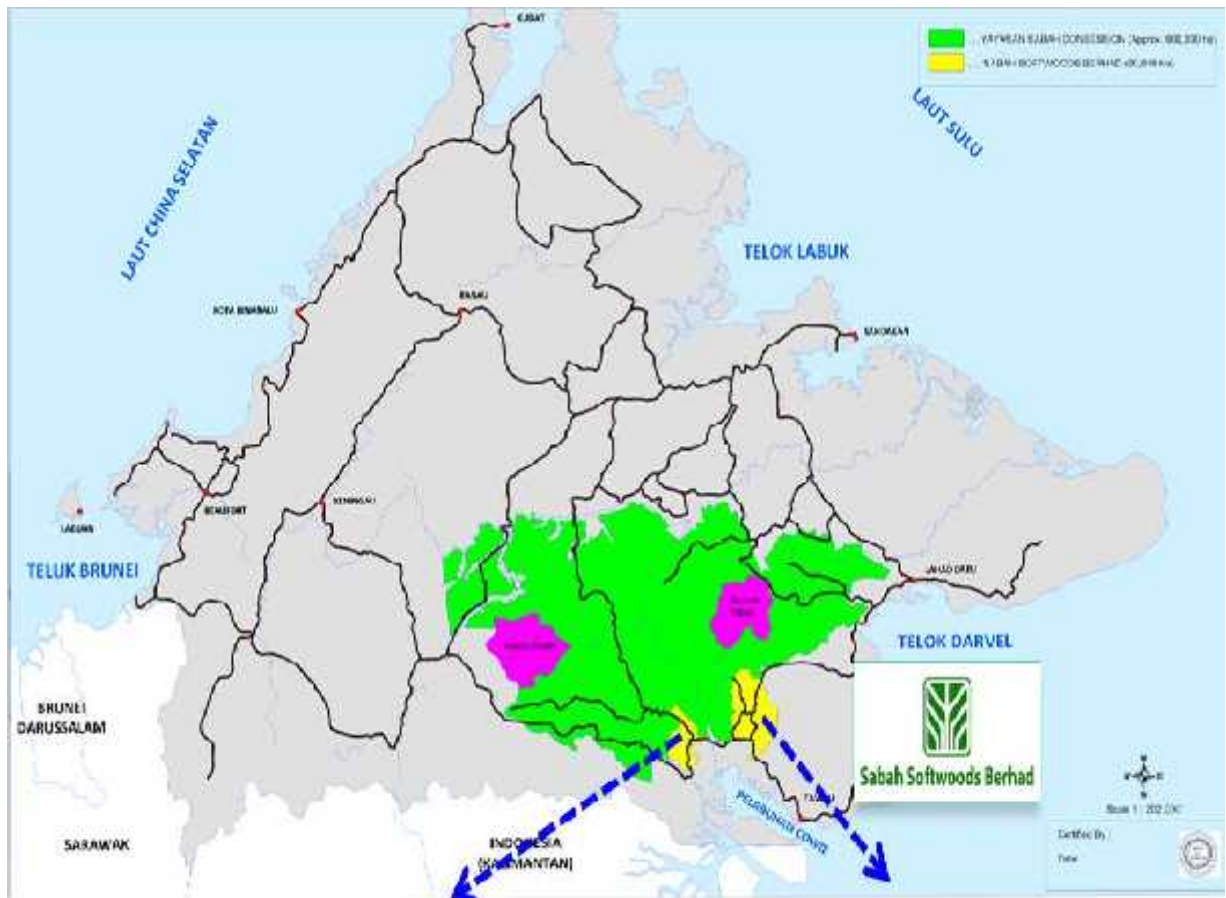
SSB is situated at the north-west region of **Tawau District (Figure 1)**. The company is located about 1 hour's drive from Tawau along the Tawau – Kalabakan - Keningau trunk road.

CORE BUSINESS

Our core business is in Trees and Oil Palm plantations along with woodchip mill and crude palm oil mill. Tree plantation cover an area 20,000 ha, whilst the Oil palm plantation cover 30,000 ha. The remaining land bank areas cover 7,000 ha of conservation and 3,000 ha for housing, amenities, and infrastructures.

Our organization operates the business on the principles and philosophy of 3P's – people, Planet and Profit. We see sustainable development as a balance between making economic

SSB LOCATION MAP



CERTIFICATION

Sabah Softwoods Berhad (SSB) Tree Plantation area is Forest Stewardship Council® (FSC-CO10070) certified. Tree plantation area received its first Well Managed Plantation Certification on 2007 and was recertified on 2012 and 2017. The current certificate SCS-FM/COC-00101P with license code FSC-CO10070 is expiring on 29 October 2022. This year annual audit is scheduled from 25-29 November 2019. The FSC® certified area is 22,947.27ha. Tree plantation is committed to maintain the certificate.

FSC® CERTIFIED AREA STATEMENT AS AT AUGUST, 2019



Chip mill operation obtained its first certification on 2011 (Certification SGS-COC-008500 and SGS-CW-008500). Chain of Custody (COC) FSC-C104743 certification has been re-certified for the second time on 2nd March, 2016, (revise for FSC-COC V3 on 11st October 2017) and is valid until 1st March 2021.











COMMITMENT

SSB has firmly committed to continual improvement in managing the fast growing Trees Plantation in sustainable and well manner which is environmentally sound, socially acceptable and economically viable through the following principles and practices:

- Undertaking the Trees Plantation activities within the parameters of the titled land in conformity with the conditions in the land titles issued by the Land and Survey Department of the State of Sabah.
- Comply fully with all legislations namely Sabah Forest Enactment 1968, Environmental Protection Enactment 2002, the Wildlife Ordinance and Wildlife Conservation Enactment 1997, the Sabah Labour Ordinance, the Employment Act, and all relevant Health and Safety Regulations.
- To ensure that the objectives of the Trees Plantation are continued on a long term basis, the Management of Sabah Softwoods Berhad is committed to maintain 17,991.01 hectares of the total plantation area under Trees plantation.
- The management is committed and will continuously strive to maintain the standards set in all the 10 FSC principles.
- Undertake systematic and regular reviews of performance through management of corrective actions and Internal Audit.
- Clearly define and communicate environmental/sustainable forest management responsibilities to our employees and to support them with training and appropriate resources to ensure those responsibilities are fulfilled.
- Provide job opportunities for surrounding local communities.
- Avoid any adverse impacts to the property, resources, and/or livelihoods of the local community, by means of protecting and monitoring the river, protected forest and Environment.

DEMARCATIION BOUNDARY

DESCRIPTION	BELIAN POSTS (COLOR)
A. AREA BOUNDARIES 1. Block Boundary (FSC certified area) 2. Block Boundary	 
B. CONSERVATION AREAS 1. Riparian 2. Water Catchment Area 3. Steep Areas 4. Wildlife Corridor Paths	 
C. TRIAL PLOTS	 
D. Title Boundary SSB Land Title Boundary	 

TREE PLANTATION

The operations is guided by the 10 Year Tree plantation Management Plan (2016-2025). The overall goal of the tree plantation is to replant fast growing tree species on a shorter rotation period in a homogenous manner which will enhance the yield per ha with higher operating efficiencies at optimum cost. The fast growing species includes the *Albizia falcataria*, *Acacia mangium*, *Eucalyptus pellita*, and *Eucalyptus hybrid*. As of 30 August 2019, the planted area by species is as follows:

	Age (Year)	A. Falcataria (Sur.Ha)	E. Hybrid (Sur.Ha)	E. Pellita (Sur.Ha)	Teak (Sur.Ha)	Mix/Others (Sur.Ha)	Classification	Age (Year)	A. Mangium (Sur.Ha)	TOTAL (Sur.Ha)
Mature Trees (2009)	10	237.78	11.48	29.16	27.43	112.15	Mature Trees (2012)	7	7.87	425.87
Immature Trees (2010-2017)	9-2	4,435.01	824.49	8,827.54	156.47	59.74	Immature Trees (2013-2017)	6-2		14,303.25
Immature Trees (2018)	1	232.53	50.55	1,345.58	39.61	-	Immature Trees (2018)	1	-	1,668.27
New Development (2019)	0	68.32	6.84	780.44	20.61	-	New Development (2019)	0	-	876.21
Work in Progress	0	-	-	-	-	-				894.85
Total		4,973.64	893.36	10,982.72	244.12	171.89	Total		7.87	18,168.45

CLASSIFICATION OF TREE PLANTATION AREA ACCORDING TO ALTITUDE

Category	Altitude Class (ft)	Area (Ha)	%	A.falcataria	E.hybrid	E.pelilita	A.mangium	Teak	Mix/Others	Harvested	Backlog
FSC	< 600	17,273.60	95.07%	843.77	72.38	800.35	-	-	-		
	600-1000			3,379.07	464.42	6,911.58	7.87	232.85	86.45		
	>1000			750.80	356.56	3,270.79	-	11.27	85.44		
Work In Progress	< 600	894.85	4.93%							27.64	-
	600-1000									277.21	106.85
	>1000									376.44	106.70
Total		18,168.45	100.00%	4,973.64	893.36	10,982.72	7.87	244.12	171.89	681.29	213.55

The Altitude class distribution is categorized into three categories as shown above. The plantable area is about 18,168.45 ha. About 63 % (11,466.30 ha) of the area is categorized within the range 600-1000 ft and is for *Albiziafalcataria* (Af), *Acacia mangium* (Am), *Eucalyptus pellita* (Ep), *E. hybrid* (Eh) and Others. Approximately 9.6 % (1,744.14 ha) of the area has less than 600 ft mean above sea level which is reserved for same planting

LEGAL FRAMEWORK

All implementation activities stated in the Tree Plantation Management Plan (TPMP) are primarily governed and regulated in accordance with acts, enactments and regulations.

PLANTATION ESTABLISHMENT AND MANAGEMENT

The activities include pre-replanting preparation (survey), land preparation for planting, field planting, planting materials, nursery, and upkeep & maintenance. These activities are stated in the TPMP. Chemicals are used to eradicate noxious weeds during land preparation and upkeep & maintenance up to 18 months. The selection of weedicide chemicals is based on the weeds spectrum.

Type	Chemical	Dosage/Ha	Total (lit)	Ha.	Lit/Ha	Weeds spectrum	Sprayer nozzle
Blanket spraying	Round up & Touch up	6-7 Litre (200 ml/pump)	12,373	2,096.2	5.9	Grasses, Sedges, & Broadleaves	LSA 4
	Metron	90 gm (3-5 gm/pump)	298	1,179	63.20	Ferns & ipil-ipil	
After Planting Spraying	Round up & Touch up	160ml/pump (4.5 to 3.0 lit/ha)	70,613	15,313	4.6	Depend on round and weeds condition	LSA 4/1 Green nozzle

UPKEEP & MAINTENANCE

Upkeep and maintenance activities are carried out according Standard Operating Procedure (SOP). After Planting Spraying (APS) is carried out upto 18 months of planted trees. Selective creepers cutting are carrying out from 2 years after planting upto maturity.

REPLANTING PROGRAMME

Species	2016	2017	2018	2019	2020	2021	2022	2023	2024	2025
	Ha	Ha	Ha	Ha	Ha	Ha	Ha	Ha	Ha	Ha
EP	1,500	1,500	1,396	1,200	1,500	1,500	1,500	1,500	1,500	1,500
AF	1,000	800	670	800	800	800	800	800	800	800
Total	2,500	2,300	2,066	2,000	2,300	2,300	2,300	2,300	2,300	2,300

E.pellita is being planted in a large scale as it has a greater tolerance to *Ganoderma* relative to *A.mangium*. Low productive areas will be given top priority for harvesting and replanting program.

HARVESTING PRODUCTION PROGRAMME

SUMMARY OF THE PROPOSED 2019 HARVESTING & REPLANTING PROGRAM - 2nd Draft (28.09.2018)								
YEAR OF PLANTING	TOTAL AREA (Sur. ha.)	TOTAL AREA (Pltd. ha.)	TOTAL PROD. VOL (m ³)	A.FALCATARIA		E.PELLITA		BACKLOGGED
				AREA (ha.)	PROD. VOL (m ³)	AREA (ha.)	PROD. VOL (m ³)	AREA (ha.)
2007	43.68	42.46	5,143	40.99	5,031	1.47	113	-
2008	42.66	40.28	4,818	37.07	4,572	3.21	246	-
2009	142.26	132.56	15,285	132.56	15,285	-	-	-
2010	198.94	186.99	24,508	152.97	20,658	34.02	3,851	-
2011	367.59	348.11	44,388	348.11	44,388			
2012	257.56	240.24	20,796	-	-	240.24	20,796	-
2013	1,034.87	926.22	46,012	-	-	926.22	46,012	-
2014	21.79	21.22	3,604	21.22	3,604			
GRAND TOTAL	2,109.35	1,938.08	164,554	732.92	93,538	1,205.16	71,018	-

*Note:- Volume estimation based on SSB Simulator ver. 2.5

For year 2019, a total of 164,554 m³ will be produced. Harvesting is done with cable yarding system. This minimizes the soil compaction and helps to improve the growth of the tree in its earlier cycle. This system forms one of the key elements which allow the tree growing operations to fulfill their potential by delivering prime sites unaffected soil compaction. Currently, 22 yarders are in operations and able to produce up to 274.76 m³/month.



Cable Yarder System



The branches are trimmed in the field before yarding to the landing area.



In the landing area, the full length is cut into 4 meter length.



Pulplogs and sawlog are trucked separately.



Warning signboards are posted within the harvesting operations are for public awareness.

10 YEARS ANNUAL PRODUCTION

10 years (2020-2029) Annual production has been formulated, with annual harvesting area of 2,011 ha per annum. The average estimated yield 114 m³/ha for all species. (Refer figure below).

No.	Year of	Harvesting Area (Ha)	Est.Yield (m ³ /ha)	Estimated Production Target (m ³)			Remarks
	Harvesting			Total Volume	Sawlog/ Peeler Log	Pulplog/ B. board	
1	2020	2,025	95	193,547	11,554	181,994	
2	2021	2,013	128	255,150	8,481	246,670	
3	2022	2,095	94	199,461	5,206	194,255	
4	2023	2,059	78	157,173	3,303	153,870	
5	2024	2,369	59	139,895	4,861	135,034	
6	2025	2,015	82	164,116	5,889	158,227	
7	2026	1,409	73	102,464	5,670	96,793	
8	2027	2,052	146	301,518	48,401	253,117	
9	2028	2,025	207	419,227	75,227	344,000	
10	2029	2,035	201	410,126	72,756	337,370	

PLANTATION INVENTORY

The objective of the plantation inventory is to provide information on the current growing stock and growth data in term of Mean Annual Increment (MAI) for the yield prediction by log category (sawlogs or peeler logs and pulplogs or blockboard) according to the marketing specification.

Three levels of inventory being monitored in the plantation are as follows:

- a. Stocking Survey Inventory-to provide information on the stocking rate and growth (height development) at the initial planting stage which is at age 3 months after planting.
- b. Mid-Rotation Inventory-to provides information on the growth performance at mid-rotation age i.e.: *E. pellita* at age 3 years and *A. falcataria* at age 5 years.
- c. Pre-Harvest Inventory-to provides information on the likely product volume yield shortly before harvesting age. i.e.: *E. pellita* at age 5-7 years and *A. falcataria* at age 10 years

The parameters assessed are usually confined to numbers of stems per hectare (SPH) or % of survival rate, basal area per hectare, Mean Top Height, Quadratic mean-DBH (cm) and possibly some indication of block conditions or if there is any P&D symptoms. The sampling method is based on standard inventory procedures. Every plot should be located at a sampling intensity of 1 plot per hectare, meaning plots should be located on a 100 meter by 100 meter grid escapement. Each plot is **0.04 ha**, making a **4% sample**.

The data will be analyze and recorded to monitor the tree growth performance. It also will be updated into the Plantation Master Record for future references and as an input for growth model.

RESEARCH & DEVELOPMENT

Borneo Forestry Cooperative (BFC) Executive Committee visited Brumas Trees Plantation on 28th February 2019. The objective of the visit is toudate BFC executive member on research activities on Ceratocystis Tolerance Program for Acacia Species, Breeding Population Trial for E.pellita Species, Eucalyptus Hybridization Program, Eucalypt Silviculture and Management for Solid Wood Product, Albizia2ndGeneration Seedling Seed Orchard (SSO) and Solid Wood Study and the end use utilization.Participants of the visit are from BFC committee executive's member with presence of Sapulut Forest Development Director, Forestry Department representatives and Sarawak Forestry Cooperative representative.



Ceratocystis Tolerance Program presented by Mr Redzuan Abdul Rauf and Mr Mahadir Lapamu



Control Pollination presented by
Mr MahadirLapamu



Group Photo Session

INTERGRATED PEST CONTROL (IPC)



Starting in the middle of 2017, the Pests and Disease Unit has come to trying the new technique in the effort to control the pests and disease attack by diversifying the approach. In the effort to control the bagworms attack on *Albizia falcataria*, (Af) this unit has come with the effort to plant the beneficial plant in surrounding the

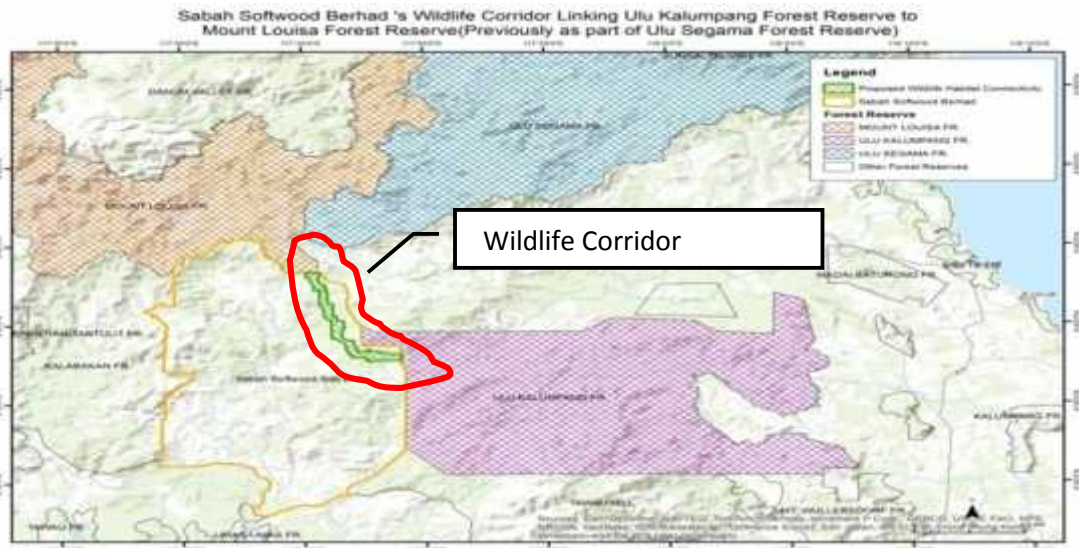
particular block trees area especially to the along the main road side.

ENVIRONMENT & CONSERVATION

The HCVFs represent about 18% of the FSC certified (22,947.24 Ha) in Tree plantation area. The HCVFs areas comprises protected steep areas, water catchment areas, riparian reserves and wildlife corridors which links some of the protected and reserved areas to assure free movement of the wildlife and rich in biodiversity.

ESTABLISHMENT OF WILDLIFE CORRIDOR

The green corridor is located in the North Eastern part of Brumas region, as shown in the map below. The length of the corridor is 13.89 km covering 1,067 hectares with width ranges from 400m-800m. The establishment of this green corridor is to allow the movement of wildlife species between the Ulu Segama FR (242,884 ha) and Ulu Kalumpang FR (51,118 ha). Further, this will reduce human-wildlife conflict especially elephants to keep away from the plantation.



As of August 2019, a total of 51,211 mixed indigenous dipterocarps, pioneers and wild fruit seedlings have been planted for wildlife habitat. The planted seedlings include Dipterocarp species *Dryobalanops lanceolata* (Kapur paji), *Shorea leprosula* (Seraya tembaga), *Shorea johorensis* (Seraya majau) and etc, Non- Dipterocarp *Neolamackia cadamba* (Laran), *Pterospermum sp* (Bayor), *Octomeles sumatrana* (Binuang) and etc, and fruit trees *Mangifera indica* (Mangga), *Mangifera sp* (Bambangan), *Neohelium lappaceum* (Rambutan) and etc...



The realistic ecological indicators for the wildlife corridor are: tree canopy cover, presence of wildlife (elephants, orang utan, clouded leopard and etc...), number of naturally regenerating native tree species and number of planted trees surviving to three years. Measuring tools to monitor wildlife are direct sighting (direct sight the elephant, transect walking) and indirect sighting (camera traps, satellite collar).

RESTORATION FOREST



Restoration forest function is to restore the area with commercial timber species for economic and biodiversity values. The areas cover 1,027 ha. Restoration planting with indigenous dipterocarps species commenced in 2015. As of August 2019, a total of 39,424 commercial timber species has been planted for economic value and biodiversity. The planted indigenous seedlings consist of nine (9) Dipterocarp species (*Slow growing species for high-quality production*) which includes *Shorea leprosula* (Seraya tembaga), *Shorea johorensis* (Seraya majau), *Dryobalanops lanceolata* (kapur paji), *Hopea sangal* (Gagil), *Neolamackia cadamba* (Laran), *Hopea nervosa* (Selangan jangkang) and *Hopea sp* (Selangan batu).

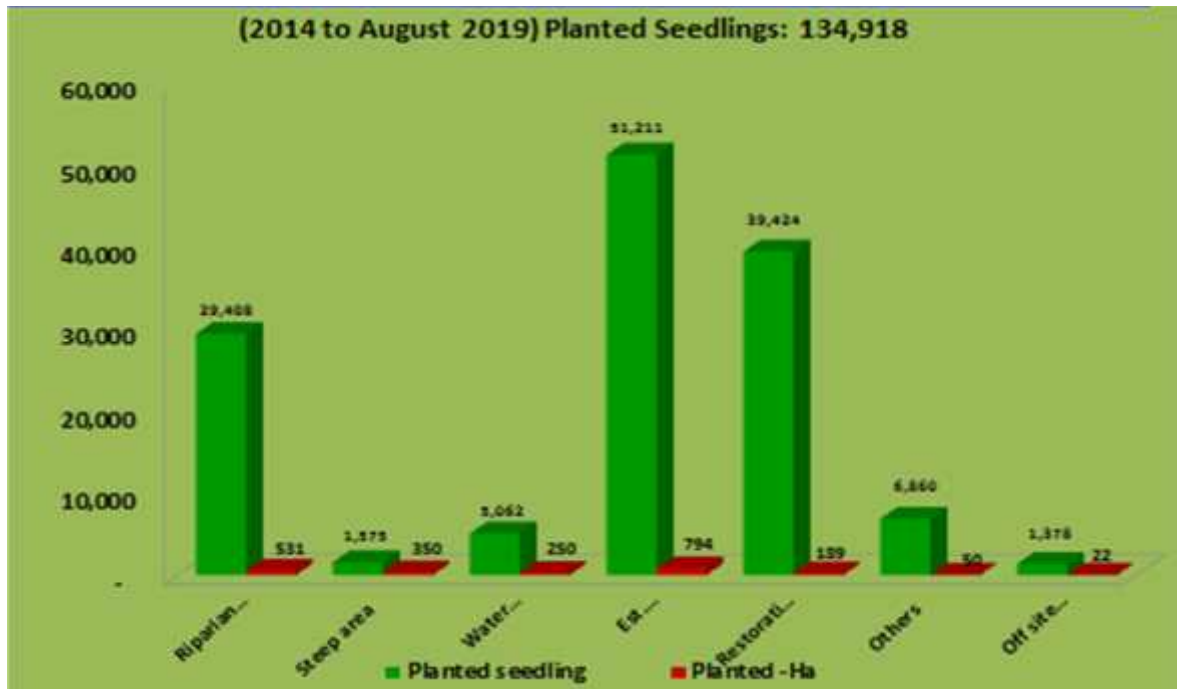
RIPARIAN RESERVE MANAGEMENT



Riparian planting commenced in 2014 along the riparian reserves of Sg. Umas-umas (44.40 km), Sg. Merotai (25.15 km) and Sg. Indit (15.20 km) which flows through the Brumas region. The planted seedlings were mainly *Octomeles sumatrana* (Binuang), *Shorea mecistopteryx* (Kawang burung), *Pterospermum sp* (Bayor), *Laurace family* (Medang), and *Neolamarckia cadamba* (Laran). Wild bananas in selected areas were also planted as food crops for wildlife.



The function of the riparian reserve is can protect and maintaining the water quality, hydrology and reducing the erosion from happen. Besides that, the riparian reserves can maintain the habitats for the freshwater biodiversity and provides a corridor for animals to move between adjacent forest areas. Tree that been planted at the riparian reserve also can as the shading for the animals, as the habitat and food for the wildlife.



Protected steep areas and water catchment areas have a natural environment and richest with food crops for wildlife. Exposed areas and old trail paths and establishment of wildlife corridors were being planted with indigenous species such as *Shorea parscifolia* (*seraya punai*), *Parashorea spp* (*Urat mata*), *Shorea section of shorea* (*Selangan batu*, *Dipterocarp kerri* (*Keruing gondola*), *Pterspermum spp* (*Bayor*), *Lauraceae family* (*Medang*), *Dryobalanops lanceolata* (*Kapur paji*), and fruit trees namely, *Nephelium spp* (*Rambutan*) and *Durio spp* (*Durian*) for richer biodiversity.

From 2014 to as of August, 2019, a total of 134,918 native seedlings were planted mainly on the Steep Area, Water Catchment, and Riparian reserves, Wildlife Corridor a in the Restoration area. The planting materials of seeds and wildings are collected from our protected steep and water catchment areas. Fully matured seeds are collected immediately to avoid predation by pest, especially insects and wild boars. Seed collection activities are routinely planned to exploit mass dipterocarp fruiting events in Sabah. Dipterocarps produce seeds in large quantities at least once every three years. To date, estimated 465.22 Kg by weight, 15,965 of seeds by count and 3,500 wildings were collected and nurtured in our HCVFs nursery. Wildings appear to perform on a par with seedlings at both the nursery and field stages.

Upkeep and maintenance activities are the major activities after planting. It is regularly scheduled and be carried out within the period of three years beyond which nature takes its course. Maintenance activities, i.e. ranging from round 4 for year 1 and 2 to round 2 for year 3 on circle weeding, row slashing, cutting creepers and unwanted climbers are conducted for planted seedlings and natural regenerating seedlings. Census is one of the components in the enrichment planting. It plays an important role in determining the survival rate of the planted seedlings as well as to those tended seedlings.



TREE PLANTING PROGRAM



Yearly awareness educational program is organized by the Environment and Conservation Dept. This awareness program is participating by internal and external stakeholders. Since 2014 until August 2019, Environment and conservation department already

conduct Ten (10) awareness program of tree planting day and became the annual program. The next tree planting will held on October, 2019. These programs giving education awareness towards public about the important of conserve the environment and protect the endangered wildlife. There have several of type of tree species that been planted which is dipterocarp, non-dipterocarp and fruit tree species.



Students and visitor are invited to take part in an activity which aims to raise awareness of the need to protect trees and the health benefits of planting. Top management took part in the programme to create awareness to the employees. Planting forest trees

besides enhance biodiversity helps in carbon sequestration. What we do in SSB may not have a great impact as a whole but we believe changes come one step at a time. Like in the words of wisdom of a famous person “You must be the change you wish to see in the world”.

WILDLIFE MANAGEMENT



Wildlife, including all the birds, represent a form of biodiversity that readily appreciated by the public, particularly large mammals like the elephant, orang utan, red leaf monkey, sun bear and deer. The goals of wildlife management are to maintain and enhance populations of wildlife in

restoration and wildlife corridor area. This is may be done by maintaining and enhancing specific habitats, controlling the poaching and illegal trapping of wildlife. The maintenance of habitat for threatened and endangered species is given special emphasis.

The Forestry Department views its role in wildlife management as an important role in wildlife management as an important aspect of forest conservation, as well as its public image. Therefore, the systematic management of wildlife is the key component of the management of restoration and wildlife corridor in Sabah Softwoods Berhad area.

Wildlife monitoring

The Sabah Softwoods Berhad’s area is a lowland area (Lowland mixed Dipterocarp forest) that has been the home of elephants since before it converted to plantation in 1970s. The wildlife monitoring was established to determine the long-term population trends and distributional changes, particularly in the restoration and wildlife corridor area. Several of method been used to detect the population and trend including

direct and indirect sightings, satellite-collar, camera trapping, night patrolling and fauna inventory.

No.	Method	Target species
1.	Direct sighting, Indirect sighting, Camera trapping&Fauna inventory	All wildlife
2.	Satellite-collar&Night patrolling	Elephant

Since April 2014, WWF-Malaysia with the assistance from the Wildlife Rescue Unit have successfully managed to set 5 satellite-collar to 5 group elephants to study their movements in Sabah Softwoods and across the Kalabakan area. The presence of elephants group which are suitable for collaring is confirmed through close engagement with Mr Ram Nathan, Senior Manager of Environment and Conservation Department of Sabah Softwoods Berhad. The data that was obtained from the result of collared elephants is used by WWF-Malaysia to guide and recommend about the mitigation of Human-elephant conflict that already happen since 2014. There were 2 categories of mitigation which is short-term mitigation and long-term mitigation.

The mitigation of short-term is translocation of elephant, construction of trenches and night patrolling. The translocation of elephant is an approach that aims to reduce the damage that occurs by the wild elephant. The translocation is carried out if there are aggressive elephants that cannot be controlled by honourable warden of wildlife (WKHL).

The other of short term mitigation is the construction of trenches. The construction of trenches is next to the electric fence. This method is intended to prevent the entry of wild elephants in plantation areas and community area. This is because; it can reduce the damage that will be done by wild elephant but have some disadvantages where need the high cost. Next, night patrolling can be classified as the short and long term also. This is because, this mitigation can knowing the activities of elephants during night. The aim of this patrolling activity is to identifying and viewing wildlife activities at night and to control the movement of wild animals. The night patrolling using equipment such as elephant cannon, tires and carry lamps that have

function to repel the wild elephant in the patrol area and prevent the occurrence of crop damage and property caused by elephants.

Whereas, for the long term mitigation, there is several mitigation which is the establishment of wildlife corridor for the wildlife, night patrolling, installing the electric fence, monitoring of wildlife movements via satellite-collar and camera trapping. The aim of establishment is to conserve wildlife and as a source of food for wildlife. The planting of fruit trees in the wildlife corridor can reduce the quantity of wild animals such as elephant going to plantation and housing area.



The method of installing electric fence is mitigation that intended to prevent the entry of wild elephants into community areas and to prevent the occurrence of crop damage and property caused by elephants. Almost the entire area of housing and plantation has been installed

electric fences which need higher cost. In addition, electrical fence maintenance activities were also will be carried out due to the fallen tree affected by the installed electric fence.

Wildlife opportunistic sighting (Locally threatened)

Wildlife sighting is categories by 2 categories which is direct and indirect sighting. The direct sighting means is the people directly sight the elephant while the indirect sighting is people didn't saw the elephant but only saw the foot print, droppings or the damages by the wildlife.



All estates have been given the wildlife sighting recording form to record all the wildlife sighted daily. Warning signboards are posted at strategic places for public aware about the wildlife. Besides that, the awareness programme was been carried out for the communities aware about the rare, threatened, and endangered species of wildlife.

The wildlife monitoring is regularly conducted by our Honourable Warden of Wildlife (Field Supervisors and Conductors) at the plantation and conservation areas (steep areas, water catchment areas and riparian reserves). The course for Honourable Warden will conduct on September, 2019 by Wildlife Department and organize by Environment & Conservation Dept. The night patrolling is mainly carried out by honourable warden of wildlife to ensure the areas are fully protected and safe from any type of illegal activities. To date, no illegal activities such as felling tree, encroachment forest fire and poaching were spotted.

Translocation of elephant



The total elephant that already translocate is Eleven (11) since 2005 until 2016. The elephant were translocation to Kuamut Forest, Zillion Fotune, and Sapulut FR area by the Wildlife Department.

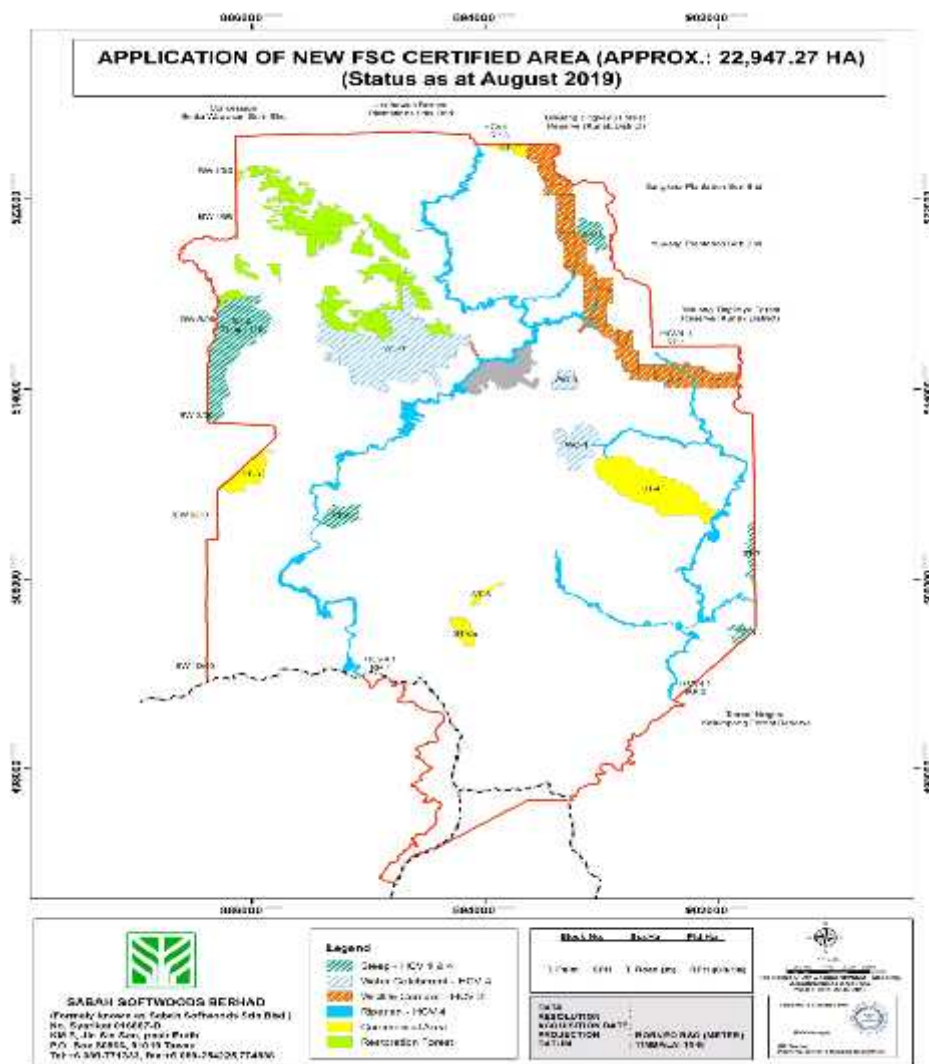
Item	Year	Translocate from	Location	No. Elephants Translocate
1	2005	Brumas Area	GunungRara- Kuamut FR	2
2	2015 (20-31.08.2015)	Dumpas Area	GunungRara- Kuamut FR	2
3	2016 (23-30.06.2016)	Dumpas Area	GunungRara- Kuamut FR	1
4	2016 (5-10.08.2016)	Dumpas Area	GunungRara- Kuamut FR	2
5	2016(24/11 – 08/12/2016)	Dumpas Area	Kawang FR / SilamLembahDanum&Sapulut FR	4
Total				11

SUMMARY OF HCVF FINDINGS FOR SSB AREA

HCVF assessments are part of a dynamic on-going process that provides a framework for managing and monitoring key biodiversity and social values. The Identified HCVs could change over time, either increasing or decreasing in

importance, hence making monitoring of these biodiversity and social values crucial. A significant number of HCV biodiversity species was identified present in the study compartments and surrounding areas. Critically endangered (CR), endangered (E), Vulnerable (V) and nearly threatened (NT) flora and fauna (HCV 1 & 4 percent) were also sighted during the assessment.

No.	Conservation area	Sur. Ha	%	HCVF Element
1	Steep Area	954.07	26	HCV 1 & 4
2	Water Catchment area	1,261.96	34	HCV 4
3	Wildlife Corridor	1,069.05	29	HCV 1
4	Riparian Reserve	416.10	11	HCV 4
TOTAL		3,701.18	100	



High Conservation Value Management and Monitoring Plan

	General HCV Management Objectives	Specific HCV Management Objectives	Management Target	Management Strategies- Area	Management Strategies- Prescriptions	Operational / Strategic / Threat Monitoring	Verifier: Main verifiers are Annual Plan and Compliance Report
Threatened and endanger species	The sites and resources on which RTE species depend are maintained	Habitats for rare, threatened and endangered (RTE) species are protected from human disturbance	Number of baseline RTE species do not decline	Compt. 110, Compt. 67, Compt. 58, Compt. 55, Compt. 33, Compt. 137,145,146 = 954.07 Hectare	No Hunting and Poaching No illegal timber cutting	Strategic: Annual Flora & Fauna survey Operational/Threat: Regular patrols on roads bordering the protected area Operational: Maintain clear boundary post at HCV site	Survey/inventory reports & analysis Patrolling report Annual compliance report (relevant section indicating boundary post maintenance, patrol summary/analysis)
Wildlife Corridor	<u>HCV 1</u> The significant ecosystems and mosaics with viable populations are maintained or enhanced. The allocated size of wildlife corridor and connectivity are maintained	Provides shortest useable corridor between two forest reserves. Maintain connectivity for large mammals	1,067.00 Ha and 3.85 Ha of wildlife corridor is maintained or enhance for wildlife movement. Zero elephants poaching or killings.	Block 97G,97J,98H, 98I,107C,107D, 108A,108B,108C, 108D,109A,109B, 109C,117G,117M, 118B,118C,118E, 126D,126H,126K, 126L,127A,127D,127 G,136C,136D, 136E,145C,145D, 145H,145K,153L, 154B,154E,154F, 154G,154H,161D, 161E * Compt.104 = 1,069.05 Hectare	No encroachment No Hunting and Poaching No illegal timber cutting	GIS analysis showing no deterioration of Wildlife corridor. Analysis indicating the connectivity for large mammals Operational: Enrichment Planting Awareness Tree Planting Program Threat : Regular patrol	Compliance report (indicating plan activities, regular patrol and awareness activity) Studies and assessment on the effectiveness of Wildlife corridors any.

	General HCV Management Objectives	Specific HCV Management Objectives	Management Target	Management Strategies- Area	Management Strategies- Prescriptions	Operational / Strategic / Threat Monitoring	Verifier: Main verifiers are Annual Plan and Compliance Report
Water Catchment / Riparian	<u>HCV 4</u> To prevent any further erosion and their subsequent impacts on water bodies. Maintaining healthy riparian reserves	Maintain the provision of basic services of nature	Enrichment/ Restoration planting at 416.10 Ha of riparian reserve. Water quality at identified sampling points are maintained or improved.	Compt. 102, Compt. 103, Compt. 112, Compt. 113, Compt. 114, Compt. 123, Compt. 84, Compt. 95, Compt. 106 = 1,261.96 Hectare RP1 to RP2 - RP3 to RP4 = 416.10 Hectare	No clearing of riparian reserve No Poaching No infrastructure Conduct enrichment planting with indigenous trees and fruit species in area with poor stocking	Strategic: Annual Flora & Fauna survey Water quality monitoring at identified sampling points Operational: Erect warning signboard for public awareness. Operational / Threat Regular Patrol	Patrolling report Annual compliance report (relevant section indicating boundary post maintenance, patrol summary/analysis) Water quality monitoring report
Steep Area	<u>HCV 4</u> Management activities do not increase the vulnerability to severe weather conditions	Avoid landslide and soil erosion	Maintain stability of steep slope	Compt. 110, Compt. 67, Compt. 58, Compt. 55, Compt. 33, Compt. 137, 145, 146 = 954.07 Hectare	No structural changes such as road construction infrastructure, etc. No clearing of natural vegetation	Regular patrol Place clear boundary post at HCV site	Survey/inventory reports & analysis Patrolling report Annual compliance report (relevant section indicating boundary post maintenance, patrol summary/analysis)

CHECKLIST HCV MONITORING, 2019

Indicator	HCV Management	Month (Timelines)												Monitoring Plan	PIC	Status	Regular reviews	
		Jan	Feb	Mar	Apr	May	Jun	Jul	Aug	Sept	Oct	Nov	Dec					
HCV 4	Steep Area																	
	1.Inventory report														Annual Flora & Fauna survey	Env& Cons Dept.	Program at MawangEstate	Env& Cons Dept.
	2.Patrolling														Patrolling report	Estate (Sr.Conductor)	Wildlife Sighting	Env& Cons Dept.
	3.Signboard														Repaired and maintenance	Estate (Sr.Conductor)	Regular Patrols	Estate
	4.Boundary post														indicating boundary post maintenance	Estate (Sr.Conductor)	Regular Patrols	Estate
	5.No Hunting/ Poaching														Erect and maintain warning signboard	Estate (Sr.Conductor)	Regular Patrols	Estate
HCV 1	Wildlife Corridor																	
	Patrolling, No hunting														Patrolling report /Awareness Program	Estate (Sr.Conductor)	Wildlife Sighting Regular Patrols	Env& Cons Dept.
	Boundary Post														indicating boundary post maintenance)	Estate (Sr.Conductor)	Regular Patrols	Env& Cons Dept.
HCV 4	Water Catchment/Riparian																	
	Inventory report														Annual Flora & Fauna survey	Env& Cons Dept.	No Program	Env& Cons Dept.
	Water Quality (Riparian)														-Identify sampling points -Riparian replanting program	Estate (Sr.Conductor)	Report from DID/ Supplier Maintenance Program	Env& Cons Dept. / Est
	Patrolling														Patrolling report	Estate (Sr.Conductor)	Wildlife Sighting	Estate
	Boundary post														Rebrushing (indicating boundary post maintenance)	Estate (Sr.Conductor)	Regular Patrols	Estate



Program



Implemented

FLORA AND FAUNA INVENTORY

Flora and fauna inventory is carried out annually. The flora inventory was done on selective land at Steep Area No.6 Oil Palm (ST60P) about 28.79 ha and was done in Four (4) days. While, for assessment in Tree Plantation area will be done on October 2019.

The objective of flora and fauna inventory is to assess biodiversity of forest community. This is done by conducting annual monitoring through assessment to assess the effectiveness of the measure employed to maintain or enhance the applicable conservation attributes. There are several parameters for flora and fauna enumerations which is identifying the types and the quantity of commercial trees, non-commercial trees and fruit trees. Besides that, identification and implementation of silviculture treatment where can enhance the tree habitat. Then, identification the types and quantity of fauna (mammals, birds, amphibians and reptilian) and keep record of periodic inventory data for future research study.

Table Show types and numbers of trees species observed in the ST60P area.

No	Commercial species		Total of Trees	m ³	(Total No Of Trees) %	Classification	Dbh (cm)
	Scientific name	Common name					
A) Commercial Trees (Dipterocarps)							
1	<i>Shorea SPP</i>	<i>Shoreaspp</i>	30	89.07		heavy hardwood	1529
2	<i>Shoreaoleasa</i>	<i>Serayaminyak</i>	11	37.15		heavy hardwood	562
3	<i>Shorealeprosula</i>	<i>Serayatembaga</i>	1	2.05		heavy hardwood	44
4	<i>Shoreaparvifolia</i>	<i>Serayapunai</i>	1	7.12		heavy hardwood	76
5	<i>Shoreaargentifolia</i>	<i>Serayadaun mas</i>	1	2.05		heavy hardwood	44
6	<i>Shoreasp</i>	<i>Selanganspp</i>	1	4.94		heavy hardwood	61
7	<i>Parashoreatomentella</i>	<i>Uratmatabeludu</i>	3	5.21		heavy hardwood	126
	Total – A		48	147.59			2442
B) Non Commercial Trees (Non Dipterocarps)							
1	<i>Macarangspp</i>	<i>Sedaman</i>	16	21.52		medium hardwood	588
2	<i>Pentacae</i>	<i>Tekalis</i>	1	2.05		light hardwood	47
3	<i>Meliaceaespp</i>	<i>Lantupak</i>	1	1.11		medium hardwood	35
4	<i>Eugenia spp</i>	<i>Obah</i>	2	5.3		light hardwood	105
5	<i>Shoreaspp</i>	<i>Melupi</i>	1	0.05		softwood	44
6	<i>Elacucarpusspp</i>	<i>Kangkurad</i>	2	2.22		light hardwood	70
7	<i>Anonaceaespp</i>	<i>Pisang- pisang</i>	4	5.38		light hardwood	154
8	<i>Baringtoniaspp</i>	<i>Tampalang</i>	1	1.11		softwood	35
9	<i>Neolamarckiacadamba</i>	<i>Laran</i>	5	15.58		light hardwood	251

	Total – B		33	54.32		1329
C) Fruit Trees						
1	<i>Duriospp</i>	<i>Durian</i>	4	7.26	<i>light hardwood</i>	164
2	<i>Anacardiaceaespp</i>	<i>Rangas</i>	11	13.15	<i>light hardwood</i>	385
3	<i>Lauraceaespp</i>	<i>Medang</i>	3	10.24	<i>light hardwood</i>	163
4	<i>Artocarpus</i>	<i>Togop</i>	2	3.16	<i>light hardwood</i>	77
5	<i>Lithocarpusspp</i>	<i>Mempening</i>	7	12.73	<i>light hardwood</i>	311
	Total – C		27	46.54		1100
TOTAL A+B+C			108	248.45	100	4871

Within the enumerated areas, there were about 21 species of trees with total population about 108 trees. There were 7 species of commercial trees with individual population of 48 trees, 9 species of non- commercial trees with individual population of 33 trees and 5 species of wild fruit trees with 27 individuals population..

Fauna Inventory Activities (a) Species of birds that found at Steep Area No.6 Oil Palm (ST6OP). (b) Some species of mammals that found (c) Method to catch the bird is using net.



a) Some species of bird that found at Steep Area No.6.



b) Some species of mammals that found



c) Method to catch the bird is using net

RECOMMENDATION

Sabah Softwoods Berhad's protected Steep Area No.6 Oil Palm (ST60P) has a very high density of flora and fauna. All the wildlife for flora and fauna need the safety area as their habitat in forest to survive. So, it is important to protect the forest and the environment to ensure the biodiversity is safe. Besides that, protect the wildlife that listed as threatened species based on the RED LIST IUCN.

Sabah Softwoods Berhad has initiative to protect the flora and fauna with;

1. Plant more fruit trees as the source of food for inhabitants in the area.
2. Erect signboard for public awareness about protected forest areas.
3. Do regular patrolling
4. Make cooperation with government or non-government agencies such as Wildlife Department, World Wide Fund and Universiti Malaysia Sabah to join inspection on the population to increase knowledge from the expert.

SOCIAL IMPACT ASSESSMENT



Social Impact assessment was conducted with internal and external stakeholders' internal stakeholders include staff, and workers. External stakeholders include contractors, shop owners, Village Head, and neighboring plantations. No major issues were highlighted.

We have not identified any customary or indigenous rights that overlap with our plantation in Brumas region. All of our operations are fully owned by us and we had no claims to prior land use or tenure made by indigenous people.

Complaints and Grievances Procedure has been developed and the channel of communication was well explained to staffs, contractors and communities staying in the camp. The Form has been developed and all the complaints have been documented and action by the Head of Unit is taken accordingly. Records will be kept at least for 3 years.



The company has a mechanism to resolve land disputes, and cases of loss of legal and customary rights of legitimate persons or individuals eligible for compensation. All individuals that request for the compensation will be entertained. The company will undergo the

procedure for the clarification and confirmation of the status of the claimant by the Ketua kampung and Land and Survey Department and Forestry Department. To date there have been no cases of communities or individuals making claims to land within the Certified Tree plantation area belonging Sabah Softwoods Bhd. The Title boundary is well demarcated on the ground and re-brushing is twice a year. The neighboring community is well informed. The Northern, Western and Eastern side of our title land is mainly occupied by oil palm plantations. The Southern part is mainly villagers occupying Kg Jelutong and Kg Sg.Udin.

Our company has put top priority to build staff and workers quarters. Shops, Police station, Multi-Purpose Hall, Soccer field, Mosque, Church and Dispensary are also made available to provide a conducive environment for the staffs and communities. There are other facilities available like Tennis Court, Padang Golf and Badminton/ Takraw Court. SSB also provided place especially for visitor that come to see the plantation area in Brumas known as Rest House.

Brumas Dispensary (clinic) is a support service department mainly under Timber operation Division. For year 2019, several programmers have been outline as follows:

PROGRAMME IN A YEAR FOR 2019														
2019	Jan	Feb	Mar	Apr	May	June	July	Aug	Sep	Oct	Nov	Dec	Remarks	
1 Active Case Detection (Malaria)		√		√		√		√		√		√	Every two months	
2 Blood Donation Program						√							Twice a year	
3 Program Pergigian											√		Twice a year	
4 Circumcision(Berkhatan)												√	Once a year	
5 Family Planning		√		√		√		√		√		√	Every two months	
6 Imunisasi		√		√		√		√		√		√	Every two months	
7 Cholesterol Test	√	√	√	√	√	√	√	√	√	√	√	√	Monthly	
8 Uric Acid Test	√	√	√	√	√	√	√	√	√	√	√	√	Monthly	
9 Glucose Test	√	√	√	√	√	√	√	√	√	√	√	√	Monthly	
10 Combur Test	√	√	√	√	√	√	√	√	√	√	√	√	Monthly	
11 Visiting & Cehcking PAKK					√		√	√					Monthly	
12 Visiting & Cehcking resident of employees					√		√	√					Monthly	
Total Workers	797	583	672	627	502	587	748	655	567					
	√												Done	
	√												Program	



The main activities of the unit are to provide services health care and medication to workers and dependants in Sabah Softwoods Bhd and also nearby plantations. The main function of this unit are to giving medication, healthcare and advices to workers and dependants, implement blood test such as Cholesterol, Uric Acid, HB% and malaria and also urine check-up for Methamphetamine, Albumin, Sugar and Pregnancy Test. It also attends emergency cases, antenatal checkup and delivery cases in order assisting the Health Dept. in Immunization, Malaria activity (spraying, MBS and MDD).

Year	Total of Donor	total of pints (ML)
2012	53	22,450
2013	76	32,200
2014	194	87,300
2015	66	29,700
2016	55	13,750
2017	30	10,520
2018	65	28,450
2019	62	27,900



WASTE MANAGEMENT



Tree plantation has identified all wastes and sources of pollution in the Environmental Aspects and Impacts Register. Potential sources of waste management pollutions are the scheduled waste, Domestic waste and Clinical waste. Standard Operating Procedure (SOP) of waste management is made available for each operating Units. Scheduled waste store has been built in the Workshop area that meet regulatory requirements, such as security, spill containment, ventilation, safety signage, segregation of wastes by type and an up-to-date inventory. Scheduled wastes are disposed through a licensed contractor as required by the authority.

General wastes are collected from staffs, labor line and office premises and disposed by burying in the developed landfill which is away from watercourse within the plantation. Burning of domestic waste is strictly prohibited and signages are posted to create awareness to the workers. Contractor Wawasan Oil Recycle Sdn Bhd, has been appointed since March 2017 to collect scheduled waste. As of September 2018, the contractor has collected the followings



Date / Period of Waste Generation	Waste Category Code	Name of Waste	Quantity Generated (MT/Litres)	Waste Handling			Balance as of Aug. 2019
				Method =	Quantity (MT/Litres)	Place =	Quantity Generated (MT/Litres)
As of Aug. 2019	\$W 306	Spent Lubricant Oil (used oil)	0	Spot	0.1233	Scheduled waste	0.1233
	\$W 410	Fuel Filter	0	Spot	180.00	Scheduled waste	180.00
	\$W 102	Battery	0	Spot	0.1000	Scheduled waste	0.1000

Clinical Waste



Rubbish bin with cover and signboards

Clinical wastes are separated and recorded in the Brumas Dispensary and being disposed through the Tawau government Hospital. Licensed contractor SedafiatSdnBhd has been appointed to collect the clinical waste. For year, as of August 2019, 12 kg Clinical Waste already disposed

Land which is conserved helps in carbon sequestration. What we do in SSB may not have a great impact as a whole but we believe changes comes one step at a time. Like in the words of wisdom of a famous person “you must be the change you wish to see in the world”.

In Sabah Softwoods Berhad, “we make the change and we give back to the People and Planet”

For more information look us up at website: www.softwoods.com.my

LAMPIRAN 1

LIST OF STAKEHOLDER, 2019

Update 02nd Jan 2019

NO	ORGANIZATION & ADRESS	TELEPHONE NO.	FAX NO.	E-MAIL/ WEBSITE	CONTACT PERSON	REMARKS
GOVERNMENT AGENCIES						
1	Pegawai Perhutanan, Daerah Kalabakan, Peti Surat 832, 91008 Tawau Sabah, Malaysia	089-799001 089-799002 016-8203304	089-799000		Osman H. Bangkong 019-8838811 Mohd Zainur Rijal B Yusof En. Wan Latif Hassim	Brantian Forestry Dept. Kalabakan
2	Pejabat Perhutanan Daerah Kunak Kunak Distric Forestry Officer Peti Surat No.02, 91207 Kunak Distric Forestry Officer (Attn. Penolong Pegawai Perhutanan)	089-851863	089-851862	Harry.lkok@sabah.gov.my Noorazah.Mohamad@sabah.gov.my	Harry Bin F. Ikok Noorazah Binti Mohammad 011 31508281	Pegawai Perhutanan Penolong Pegawai Perhutanan
3	Pejabat Hidupan Liar, Daerah Tawau, Tingkat 4, Wisma D.S., Peti Surat 519, 91008 Tawau, Sabah, Malaysia	089-763139	089-764213	sailun.aris@sabah.gov.my	En. Sailun Hj. Aris (019-8307630) En. Francis (016-8884305) Jasni Jimmy (013-5538038)	Sabah Wildlife Dept., Tawau
4	Ketua Penolong Pengarah Jabatan Pengairan dan Saliran, Aras 5, Wisma Pertanian Jalan Tasik Luyang Off Jalan Maktab Gaya Locked Bag 2052, 88767, Kota Kinabalu Sabah, Malaysia	088-428541	088-428541	waily.harim@sabah.gov.my james.giluk@sabah.gov.my	Waily Harim James Giluk (013-8682350) Duanis (016-8153637)	
5	Pegawai Kesihatan Pejabat Kesihatan Kawasan Tawau, Jalan Chong Thien Vun, Sin Onn Peti Surat 990, 91008 Tawau, Sabah	089-757144	089-757535	pkk.tawau@sbh.moh.gov.my	Dr.G Navindran (013-8861797) Muhammad Softwatuddin 013-5938257	
6	Environment Protection Department 1st-3rd Floors, Bangunan Wisma Budaya Jalan Tunku Abdul Rahman Locked Bag 2078 88999 Kota Kinabalu, Sabah	088-251290	088-238120	jpas@sabah.gov.my www.sabah.gov.my/jpas	Mr. Jomius Joseph	
7	East Malaysia Planters Association (EMPA)	019-8135936			Mrs. Alice	

NO	ORGANIZATION & ADDRESS	TELEPHONE NO.	FAX NO.	E-MAIL/ WEBSITE	CONTACT PERSON	REMARKS
8	Ketua Cawangan Jabatan Alam Sekitar Negeri Sabah Cawangan Tawau TB 4415/6/7, Tingkat 2, Lot 6,7 & 8 Lorong Sabindo Square P.O Box 60630, 91013 Tawau	089-767251 089-767252	089-767250		En. Mohd Zikri Bin Ismail (013-2103254)	
9	Jurutera Daerah Tawau, Jabatan Pengairan dan Saliran, P. O. Box 549, 91008 TAWAU	089 - 714 327	(089) 753 586		En. Syahzarul Rizal bin Joddari	
10	Jabatan Tenaga Kerja (Buruh) Pejabat Tenaga Kerja, Tingkat 2, Wisma Persekutuan Tawau, Sabah.	089-773411			Eko Bariono Tumiran	
NGOs						
11	WWF-Malaysia Suite 1-6-W11, 4th Floor CPS Tower, No.1 Jalan Centre Point, 88000 Kota Kinabalu, Sabah, Malaysia	088-248490 088-262420	088-248697	mdonysius@wwf.org.my CCheah@wwf.org.my	Msx Donysius (012-8267900) Cheryl Cheah Phaik Imm (012-5136930)	
INDUSTRY						
12	Benta wawasan Sdn.Bhd., Keruing Estate P.O. Box: Tb 9131 & 9132, Perdana Square Mile 31/2, Jalan apas 91000 Tawau, Sabah, Malaysia	089-911053 089-911054 089-912334 089-912330			Carlos Aronson Charles	Keruing Estate 089-912330
13	Usahawan Borneo Plantation Sdn. Bhd TB 8283, Lot 20c, Perdana Square Commercial, Mile 305 Apas Road, P.O Box 225, 91007 Tawau	089-736210			Abdul Samad Hj Samadong	Brumas Estate
14	AUMKAR Plantations Sdn Bhd Lot 2A, Taman Sri Idaman, Kedai Perumahan LPPB, 91207 Kunak, Sabah, Malaysia.	089-853 801 089-853 803	089-853 802	nokiahsan@yahoo.com	Chandra General Manager	019-883 9954 / 019-813 9954

NO	ORGANIZATION & ADDRESS	TELEPHONE NO.	FAX NO.	E-MAIL/ WEBSITE	CONTACT PERSON	REMARKS
15	Yayasan Sabah	089-772939	089-763192	dalloysius@gmail.com	David Aloysius	
	Rakyat Berjaya Sdn. Bhd				(019-8006767)	
	P/S 60793			charlesgarcia@myway.com	Charles Garcia	
	91017 Tawau Sabah				(019-8136924)	
16	Yuwang Plantation Sdn Bhd	089-923315			Mr. Edgar Taliban	
SCS						
17	Certification Coordinator	1510-452-6395	1510-452-6882	sonkheong@hotmail.com	Dr. S.K Yap	
	Natural Resources Division		1510-452-6898		Lead auditor	
	SCS Global Services				(012-2107466)	
	2000 Powell Street			BJacgmain@scsglobalservices.com	Beth Jacqmain	
	Ste.600, Emeryville,				218 256 2959	
	CA 94608 USA			Epoirson@scsglobalservices.com	Evan Poison	
SGS						
18	FSC-COC_Lead Auditor	6(03)20959200	6(03)20938202	Abdullah.Din@sgs.com	Mr. Abdullah Din	
	SGS (Malaysia) Sdn. Bhd (10871-T)			noramallina.harun@sgs.com	Lead auditor	
	Unit 10-1 10th Floor Bangunan Malaysia Re				019-2259051	
	No. 17 Lorong Dungun Damansara Heights					
	50490 Kuala Lumpur, Malaysia					
MSPO						
19	Malaysian Sustainable Palm Oil (MSPO)	+603 8023 2124	+03 8023 4140	robert.cheong@tuv-nord.com	Cheong, Chun Yuen (Robert)	
	TUV NORD Malaysia Sdn Bhd				012-5010066	
	No. 20, Jalan Tiara 3,			hishamsalleh@tuv-nord.com	Muhammad Nohisham Mohd Salleh	
	Subang Jaya 47600, Selangor, Malaysia	011-3216 5080				
LOG BUYERS						
20	Mega Interlink Sdn.Bhd.,	089-225992	089-274392	Mega4643@Tm.net.my	K.Y.CHUNG	
	1st Floor, Lot 3 Block 27,					
	Bandar ramai-ramai, Jalan Leila,					
	90000 Sandakan, Sabah, Malaysia					
21	Ikutmaju Sdn Bhd.,	089-772316	089-762100	Kong@ikenet.com.fg	Inuguchi/Yee	
	P.O.Box: 805,					
	91008 Tawau, Sabah, Malaysia					
22	Marubeni Corporation	81-3-32822342			Inoue	
	4-2, Ohtemachi 1- chome					
	Chiyado-ku					
	Tokyo 100-8088, Japan					

NO	ORGANIZATION & ADDRESS	TELEPHONE NO.	FAX NO.	E-MAIL/ WEBSITE	CONTACT PERSON	REMARKS
23	Newmarket Fibre Supply LTD C/o 105 Cecil Street The Octagon # 20-01 Singapore 069534	65 6572 5098			Who Siew Leong	
24	Innoprise Wood Products Sdn Bhd Mile 7 1/2, Tuaran Road, W.D.T No.30 89357 Inanam Sabah	088-495700			Leonard	
25	Cosmopolitan Wood (Sabah) Sdn. Bhd No.13A/13B, industrial Zone, Jln 4, KKIP Timur P.O Box 00835 89357 Inanam	012-2207767			Alex Lum	
26	Soonfar Woodworks Sdn. Bhd P.O Box 1377, 91038 Tawau, Sabah	016-8267200			John M.F Wong	
27	Rajang plywood sawmill Sdn. Bhd Fajar Complex Jalan Haji Karim 91000 Tawau Sabah Malaysia	089-763659			Chiu Kim Choon	
28	TSH-Wilmar Sdn. Bhd Bangunan TSH TB 9, KM7 Apas Road 91000 Tawau Sabah	089-912020			William Tan	
KETUA KAMPUNG/JKK KAMPUNG						
29	Kg. Iban				WNC : Ajai Ak. Paung	KK : Rulianna Suman
30	Kg. Baru Sg. Udin (kg. Jelutong)	010-7622497			JKKK. En Abu Bakar Bin Kumin	
31	Ketua Kampung Brumas	013-8563389			Picho bin Pawilo	
CONTRACTORS						
32	Kinshope Trading	019-8130060			Choi Mui Keng	
33	Kok Hung Sdn. Bhd	019-8333899			Wong Kai Sin	
34	Soon Sang Planting	017-8640428			Richard Ambau	
35	Addition Enterprise	012-8180126			Lim Yuen Jou	
36	Pemborong Borneo Utara	010-9431589			Allen	
37	Pengangkutan MBI	019-8505118			Mohammad Bin Ibrahim	
38	Perusahaan Sri Mewah	016-8426024)			Chen Kok Hau	
39	Nam Young Contractor				Young Foo Yu	

NO	ORGANIZATION & ADRESS	TELEPHONE NO.	FAX NO.	E-MAIL/ WEBSITE	CONTACT PERSON	REMARKS
40	Wei Heing Contractor	019-8832751			Shoo Kon Yin / Soo Kon Yin	
41	W & Y Contractor	013-8866636			Wong Ka Yin	
42	M.F Contractor	019-8332906			Wong Ka Fuk	
43	Vatmas Contractor	010-9310788			Pang Chou Hiun	
	OTHERS					
44	HOSPITAL BESAR TAWAU	089-983533				
45	BOMBA TAWAU	089-774444				
46	IBU PEJABAT POLIS TAWAU	089-752222/772121				
47	BALAI POLIS BOMBALAI	089-768730				
48	PONDOK POLIS MEROTAI	013-5400796				
49	RELA TAWAU	089-770640				
50	JABATAN PERTAHANAN AWAM (JPAM)	089-772225				
51	KLINIK KESIHATAN MEROTAI BESAR	089-902601				

Updated By:

Verified By:

Andi Ida Watie Binti Andi Pangeran
Executive - Environment and Concervation Dept.

Ram Nathan
Sr. Manager -Environment & Concervation